



Installation Guide

# ***Contur Unity***

***KNAUF***



***Build on us.***





# Contents

## **CONTUR UNITY**

Conditions of use	4
Storage	4
Package opening	5
Layout guide	5
Recommended accessories	6
Installation	7



# Contur Unity

- Demountable acoustical ceiling
- Installation in concealed T-grid
- Edge D+

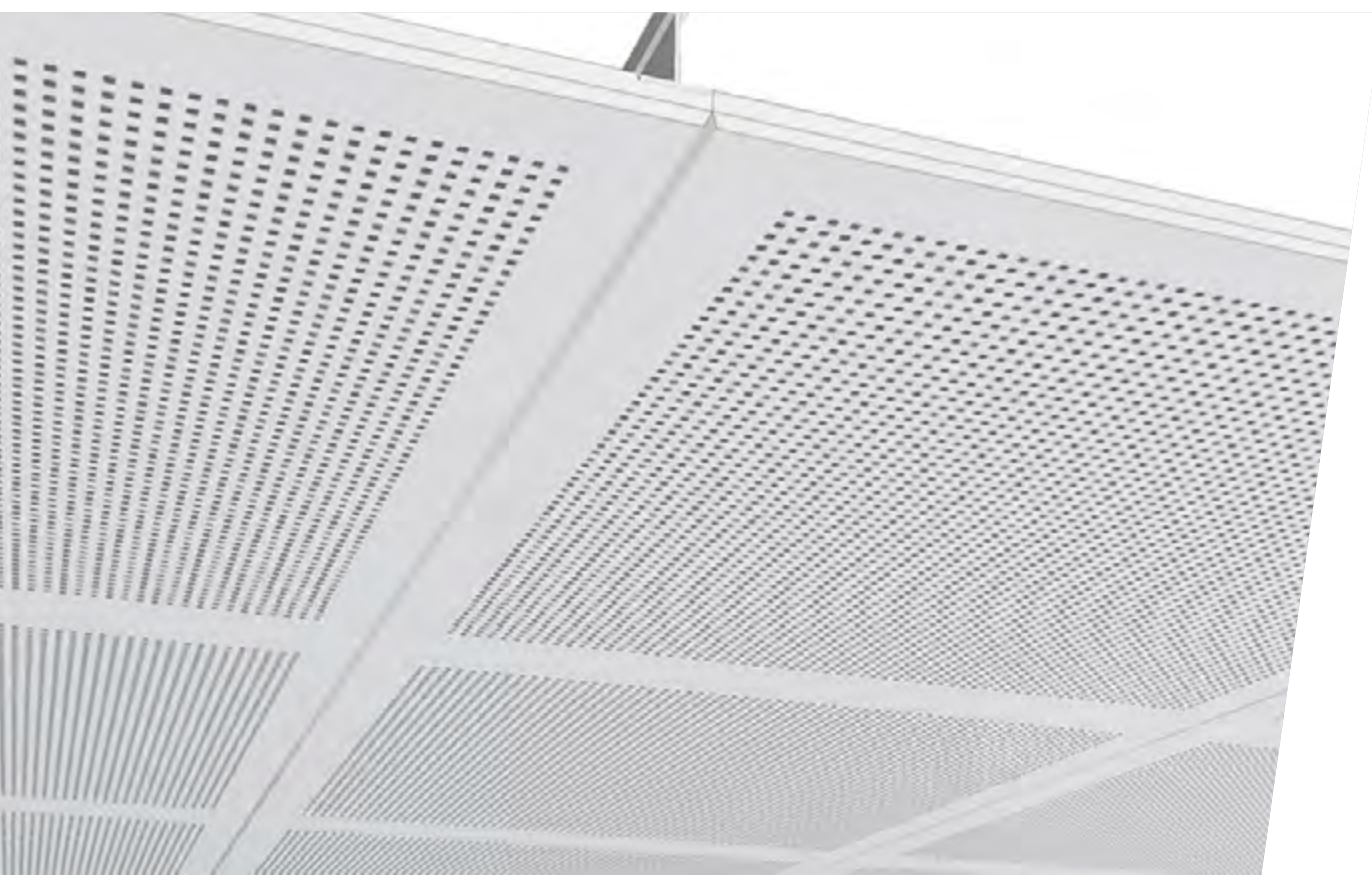
## Conditions of use

- For internal fitout of buildings
- To be installed in a closed-off building

## Storage

The products must be:

- Stored indoors clean and dry
- Stored at humidities of less than 70% RH and temperatures of less than 50°C
- Positioned on a level base
- Protected from direct moisture
- Protected from impact and shock
- Stacked max. 2 pallets on top of each other



## Package opening



Cut the plastic wrapping by running a knife along the sides of the package. Do not cut the plastic on top of the package.

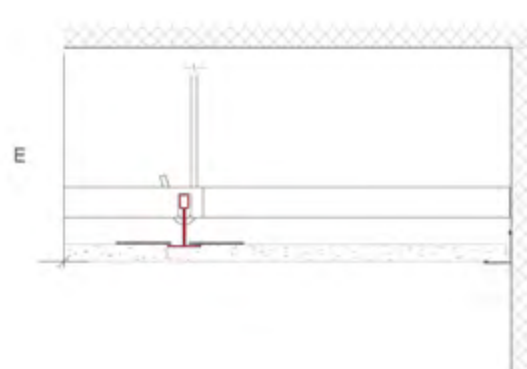
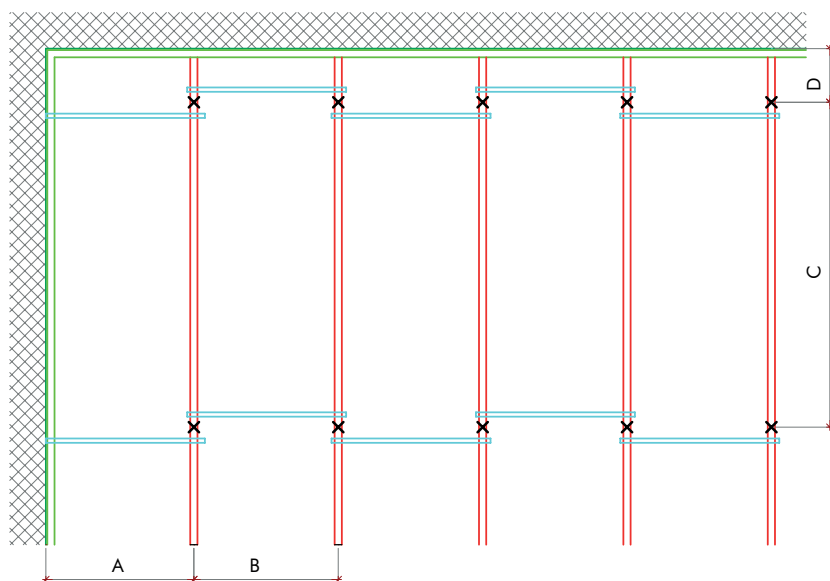


Remove the plastic wrapping.



Remove the cardboard liner around the ceiling tiles.

## Layout guide



### Legend:

- Wall angle or shadow line trim
- Main runner T24
- Spacer bar
- X Adjustable hanger (type depends on installation depth)

A = Max. 600 mm    B = 600 mm    C = Max. 1500 mm    D = Max. 100 mm    E = Min. 63 mm (with direct hanger)

## Recommended accessories

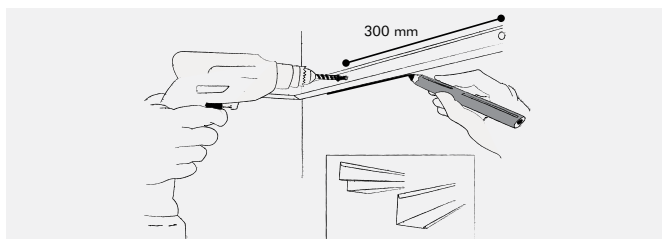
Below accessories are tested and approved for use in connection with Contur Unity.

	PRODUCT NAME	SAP NO.	W x L x H (mm)
T-grid	 Main runner T24	447854	24 x 3700 x 38
	 Spacer bar	815395	600 mm
		469861	165 - 280
		469868	315 - 580
		469872	510 - 970
		469876	630 - 1210
		469878	755 - 1460
		469880	900 - 1750
		469881	1020 - 1990
		431912	50
		316304	80
		316302	100
Extra	 Wall angle type MIE2024	434023	20 x 3000 x 24
	 Shadow line trim type MS10	772548	19+11 x 3000 / 13+19
	 Outside corner for wall angle	109102	
	 Inside corner for wall angle	109102	
		850852	590 x 590 x 30 cm
		113734	
		198956	100ml NCS 0701 Y24 R (Ral 9003)

# Installation

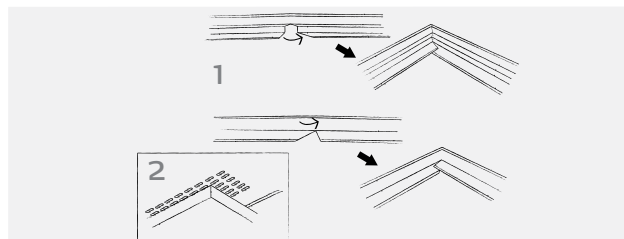
Before installation, please ensure that fixtures to primary construction can withstand the load of the ceiling.

**Best Practice:** Use of clean cotton gloves when handling product tiles will ensure a good result and a ceiling without fingermarks.



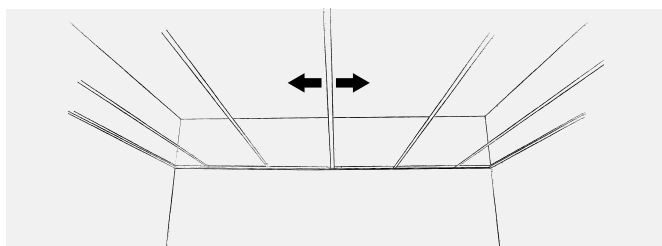
## Wall angles

- Mark the location of the wall angles on the walls and columns in relation to the required ceiling height.
- Fix the wall angles at max. 300 mm c/c. Choose the fixings in accordance with the substrate.



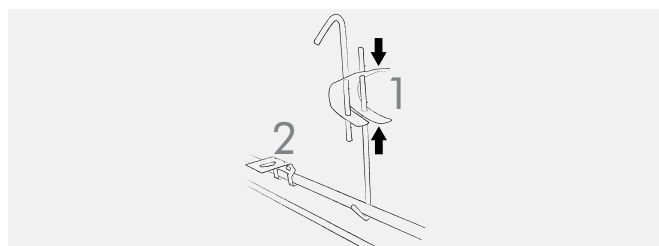
## Corners

- Inside corners (1): cut the corners in a false mitre letting the ends overlap each other, unless anything to the contrary is specified.
- Outside corners (2): must always be mitred.



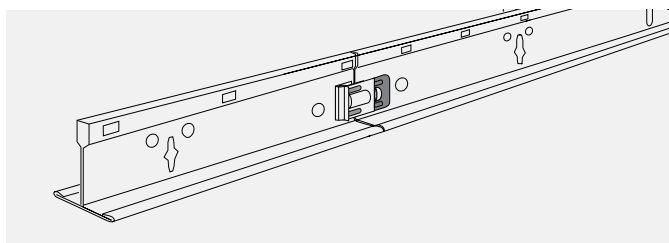
## Ceiling layout

- Divide the ceiling surface from the centre of the room or in accordance with the existing ceiling plans.
- The location of light fittings and ventilation units will have an influence on ceiling layout.
- The first main runner is installed at max. 600 mm from the wall. The other main runners should be installed at 600/600 mm c/c.



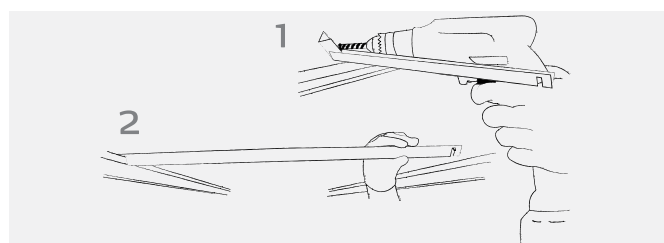
## Hangers

- Fix adjustable hangers (1) with eye screws or similar securely fastened to the primary construction.
- Direct hangers (2) are secured to the ceiling using appropriate fixings in accordance with the substrate.
- Install the first hanger at max. 100 mm from the wall. The other hangers should be installed at max. 1500 mm c/c.
- If loads from light fittings etc. are to be borne by the ceiling, install additional hangers.
- Refer to distances in the ceiling layout drawing.



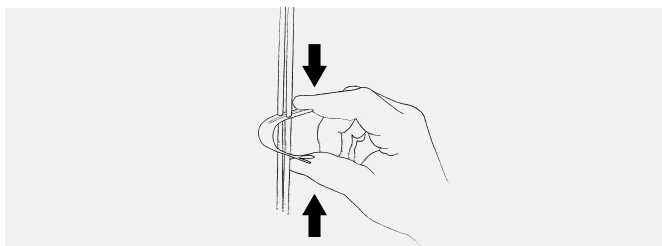
## Main runners

- Install the main runners parallel to each other so that the slots are directly opposite each other.
- Join the main runners longitudinally by clicking them together.
- Adjust the lengths of the profiles with plate shears, a hacksaw or a cross-cut saw with a special blade.
- Make sure there is a hanger between the end joints of the main runners and the fire break.



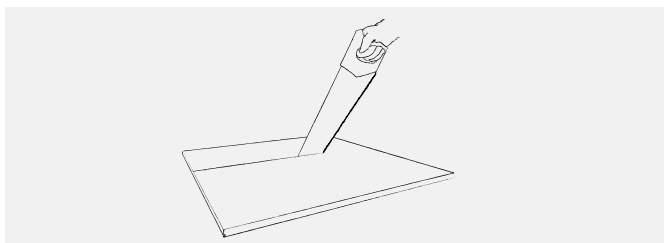
## Spacer bars

- Align the first main runner along one of the walls and secure it with the help of adjusted spacer bars screwed into the wall (1).
- Install the other spacer bars (2).
- NB! When using 50 mm direct hangers, the spacer bars must be installed at the same time as the main runners (or it will not be possible to install the spacer bars).



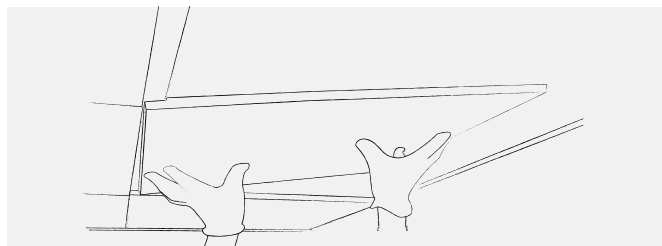
### Adjustment

- Check that all profiles are correctly aligned when the entire suspension grid has been installed.
- Adjust the hangers so that they are taut and the ceiling surface is level.



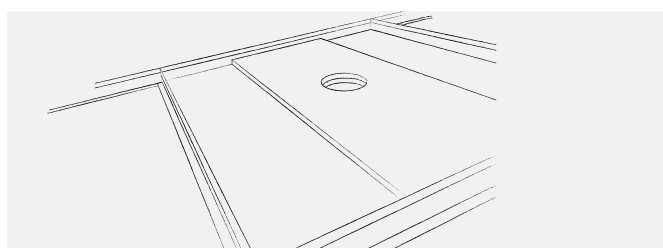
### Cutting

- Cut the tiles to size from the front face with a fine-toothed saw.



### Installation

- Always wear clean cotton gloves when handling ceiling tiles.
- Install the tiles by lifting the “male” side up across the one main runner, then push the “female” side into position on the opposing main runner and lower the “male” side on the first main runner.
- Check that all metal clips are resting on the main runner.



### Fixtures and fittings

- With smaller units (of up to 3kg) a reinforcement tile of sufficient strength can be installed behind the Contur Plus tile.
- The reinforcement tile must extend all the way into the main runners, so that the weight is transferred to them.
- The total weight should not be greater than 3kg for each m<sup>2</sup> of ceiling. Where loads are greater than 3kg/m<sup>2</sup>, additional hangers must be used.
- Units over 3kg must be installed independently, so that they do not place any load on the ceiling.

## Knauf

Kløvermarksvej 6,

9500 Hobro  
Danmark

Phone +45 9657 3000

kundeservice-dk@knauf.com

www.knauf.dk

**Build on us.**